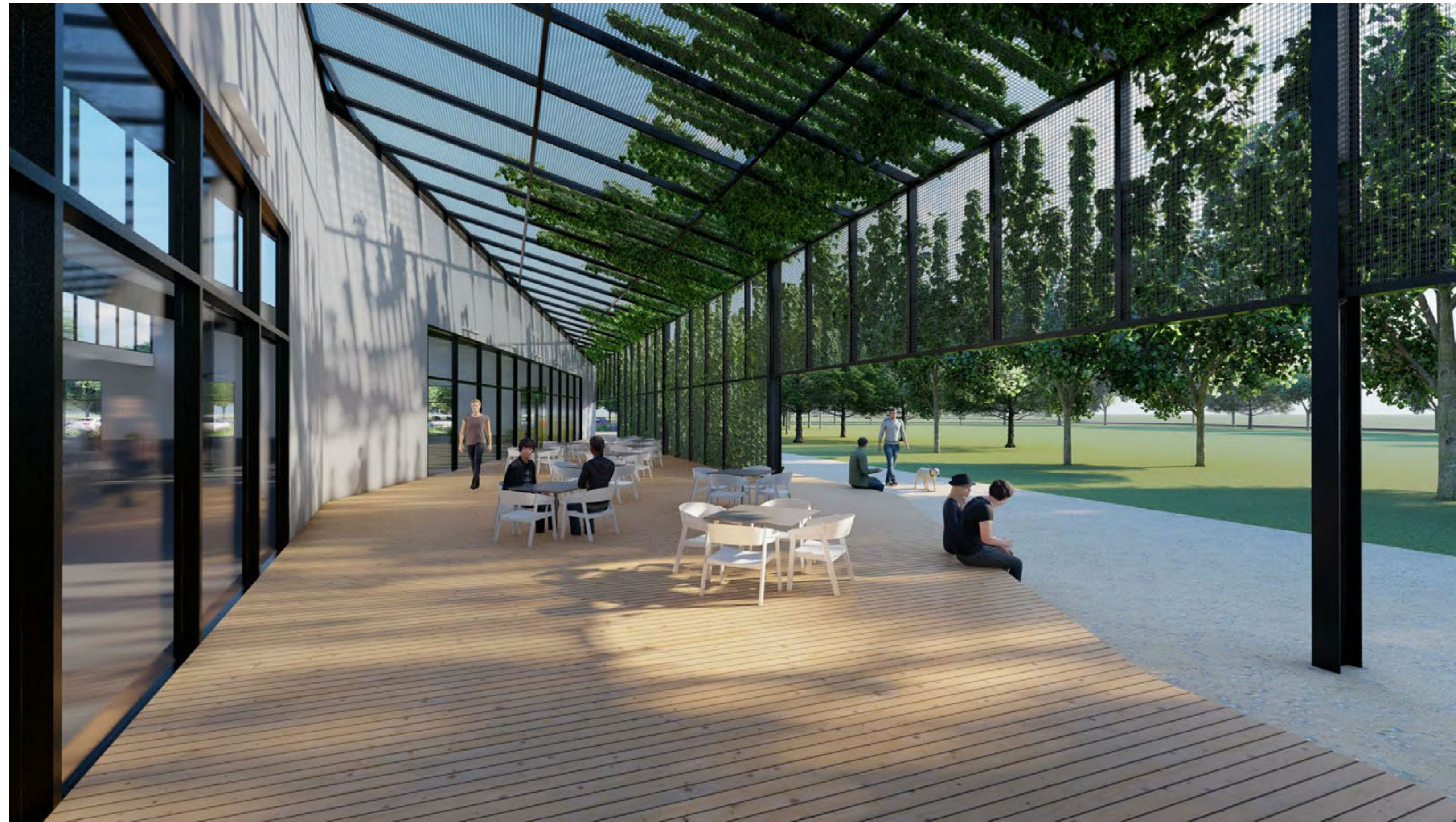


brick

ARCHITECT
Brick
405 14th Street, Suite 500
Oakland, CA 94612
www.brick-inc.com

CLIENT
8000 Foothills LLC
101 Mission Street, Suite 420
San Francisco, CA 94105



SOUTH EXTERIOR SPACE



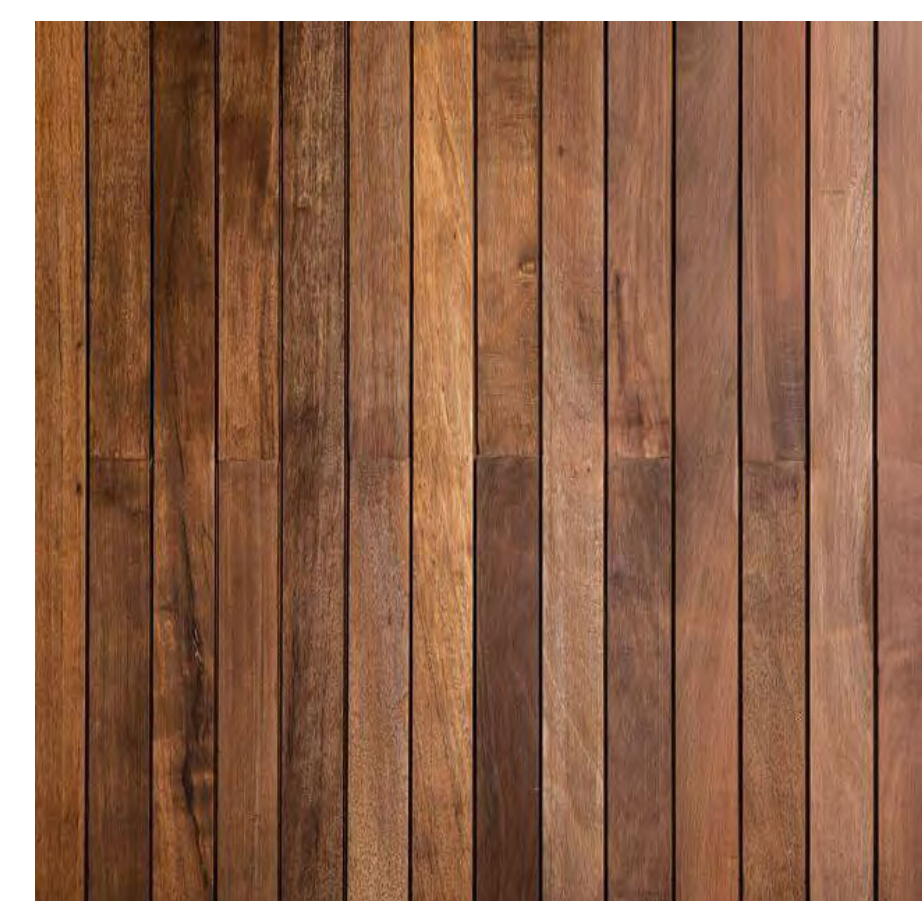
SOUTH-WEST CORNER



SECONDARY ENTRY



EAST ENTRY



IPE WOOD DECKING, SITE FABRICATED,
STAINED



McNICHOLS ECO-MESH TRELLIS,
GALVANEALD STEEL, PTD BLACK



EXTERIOR ENTRYWAY LIGHTING, LINEAR
RECESSED LED, FOCAL POINT SEEM 2



STUCCO SIDING, PTD. WHITE



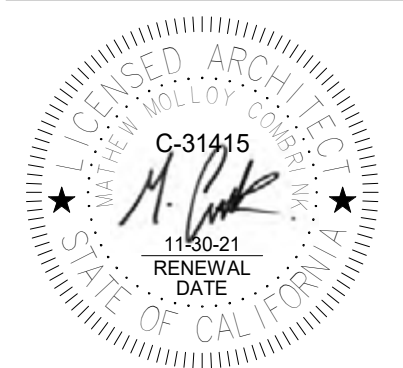
ALUMINUM STOREFRONT SYSTEM, PTD. BLACK



CORRUGATED METAL SIDING, PTD. BLACK

Copyright 2020 Brick Architecture and Interiors, Inc. All Rights Reserved. These Plans and/or Specifications are intended for the sole benefit of the client of Brick Architecture and Interiors, Inc. and may not be used, re-used, copied, or reproduced in any form without the express written consent of Brick Architecture and Interiors, Inc. No. BIM 360/8000 Foothills Unit 417, 158 St 8000 Foothills Unit 4, CENTRAL, VT

20.03.17 design review rev. 1
rev date issue



8000 Foothills Blvd
project number: Project Number
plot date: 3/17/2020 11:36:34 AM
scale: as noted

DESIGN REVIEW
MATERIAL
BOARD